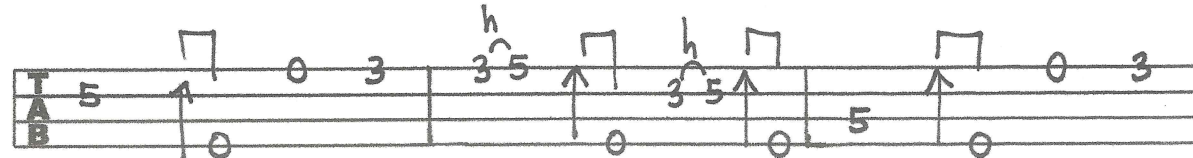
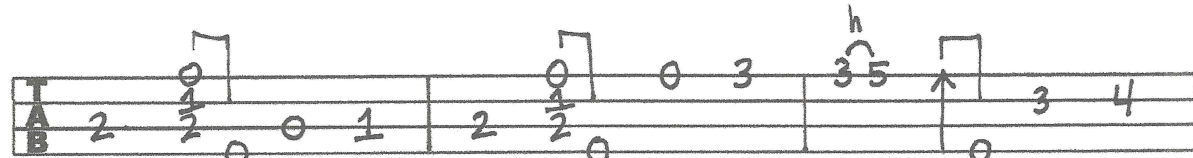
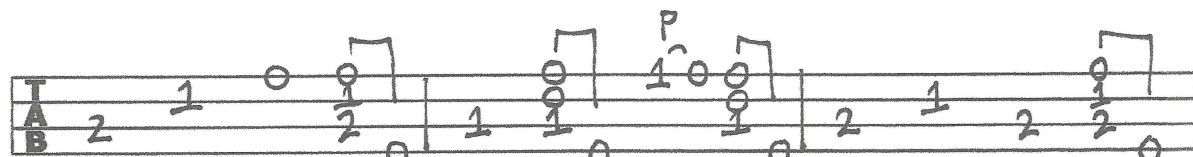
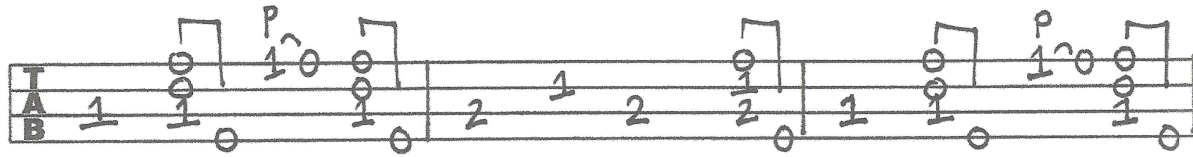
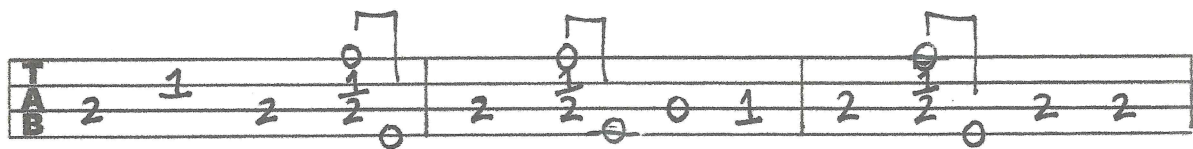
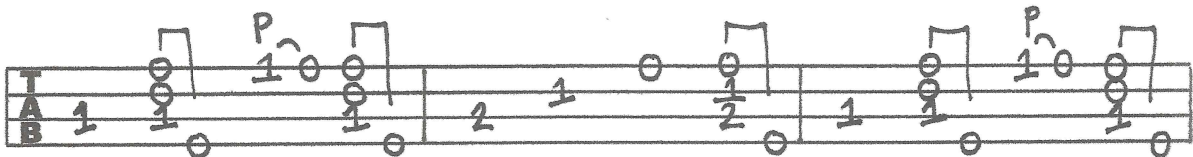
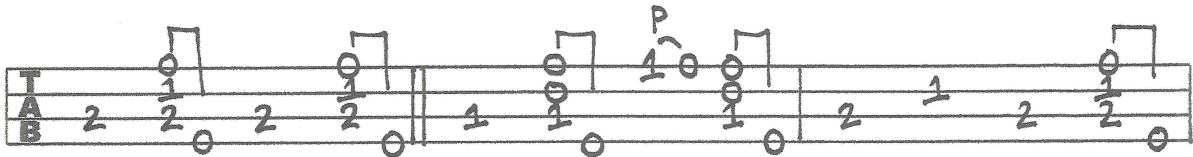
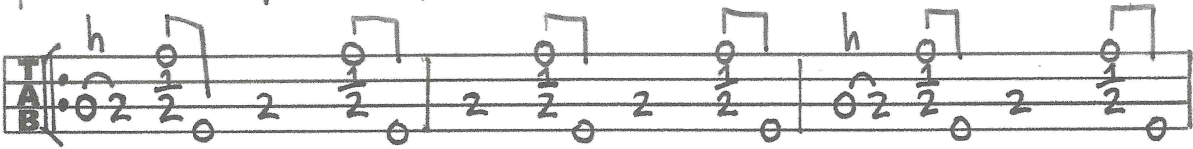


GARDEN MEDLEY

CLAWHAMMER STYLE
AARON KEIM

"Aphids in the Kale Patch"



"Raccoons in the Compost"

Handwritten musical notation for the first staff. It features a treble clef and a bass clef. The notes are mostly quarter notes and eighth notes, with some triplets. Fingerings are indicated by numbers 1, 2, 3, and 4. Dynamics include *h* (accents) and *p* (piano).

Handwritten musical notation for the second staff, continuing the piece with similar note values and fingerings.

Handwritten musical notation for the third staff, featuring a triplet of eighth notes and various fingerings.

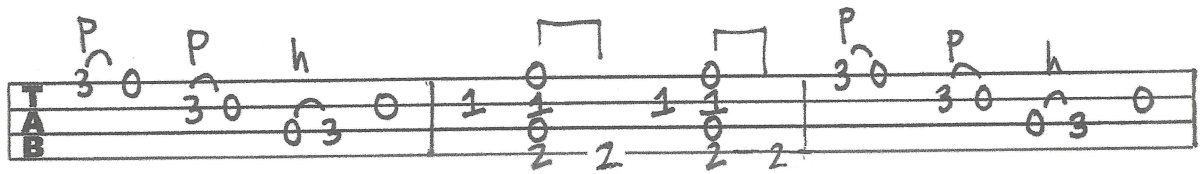
Handwritten musical notation for the fourth staff, including a triplet of eighth notes and a *p* dynamic marking.

Handwritten musical notation for the fifth staff, showing a sequence of notes with fingerings and dynamics.

Handwritten musical notation for the sixth staff, featuring a triplet of eighth notes and a *p* dynamic marking.

Handwritten musical notation for the seventh staff, which includes a first ending bracket labeled "1." and a second ending bracket labeled "2.".

Handwritten musical notation for the eighth staff, which is a repeat of the sixth staff.



NOTES ABOUT GARDEN MEDLEY:

* Notice that sometimes the brushes are marked with actual fret numbers, not just an ↑.

* When it is marked as an ↑, just hold down the last left hand melody note during the brush and carry on!

* If you follow the repeat signs properly the first tune is played twice, the second tune is played four times and the third tune is played twice.